



GAT MONTHLY MEMBERSHIP PROGRESS REPORT

Results as of: 11/30/2021

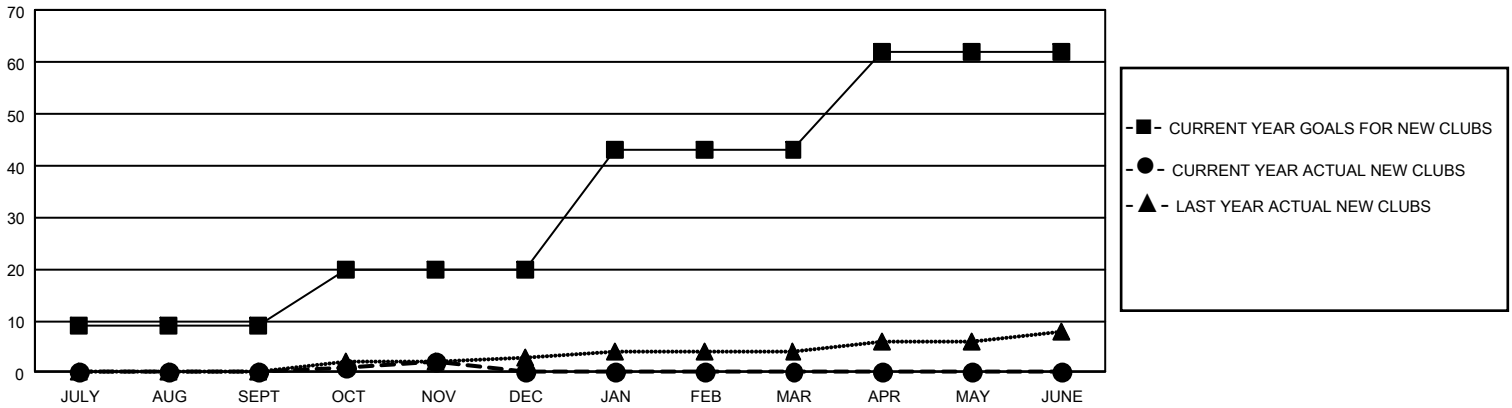
GAT Constitutional Area 5 - Japan

REPORT DOES NOT INCLUDE CLUBS IN UNDISTRICTED AREAS.

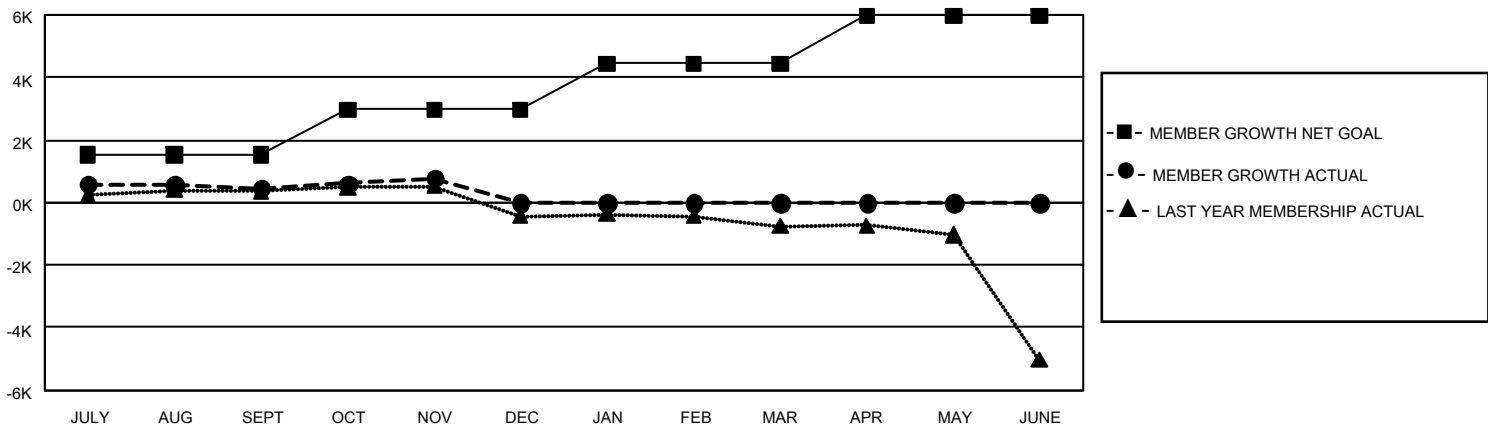
| Clubs | | | |
|-----------------------|---------------|-----------|---------------|
| RESULTS FOR 2021-2022 | | | |
| QUARTER | NEW CLUB GOAL | NEW CLUBS | DROPPED CLUBS |
| JULY/AUG/SEPT | 27 | 0 | 5 |
| OCT/NOV/DEC | 33 | 2 | 0 |
| JAN/FEB/MAR | 69 | 0 | 0 |
| APR/MAY/JUNE | 57 | 0 | 0 |

| Members | | | |
|-----------------------|------------------------|----------------------|--|
| RESULTS FOR 2021-2022 | | | |
| QUARTER | MEMBER GROWTH NET GOAL | MEMBER GROWTH ACTUAL | DROPPED MEMBERS ACTUAL (including transfers) |
| JULY/AUG/SEPT | 1540 | 1,942 | 1,350 |
| OCT/NOV/DEC | 1435 | 1,039 | 680 |
| JAN/FEB/MAR | 1461 | 0 | 0 |
| APR/MAY/JUNE | 1540 | 0 | 0 |

GOALS AND ACTUAL NEW CLUBS CUMULATIVE



GOALS AND ACTUAL MEMBERS CUMULATIVE



| | |
|------------------------|--------------|
| DROPPED CLUBS: 5 | |
| DROPPED MEMBERS | |
| DECEASED | 332 |
| CLUB CANCELLED | 2 |
| OTHER | 1,695 |
| TOTAL | 2,029 |

1,249 CLUBS OF 2,852 ADDED 1 OR MORE NEW MEMBERS

[CLICK HERE FOR CUMULATIVE MEMBERSHIP DATA](#)

| GENDER DISTRIBUTION | |
|--|-----------------|
| MALE | 78,279 (76.56%) |
| FEMALE | 23,966 (23.44%) |
| NON BINARY | 0 (0.00%) |
| PREFER NOT TO ANSWER | 0 (0.00%) |
| TOTAL FAMILY UNIT MEMBERS | 35,606 |
| FAMILY MEMBERS PAYING HALF DUES | 19,663 |